



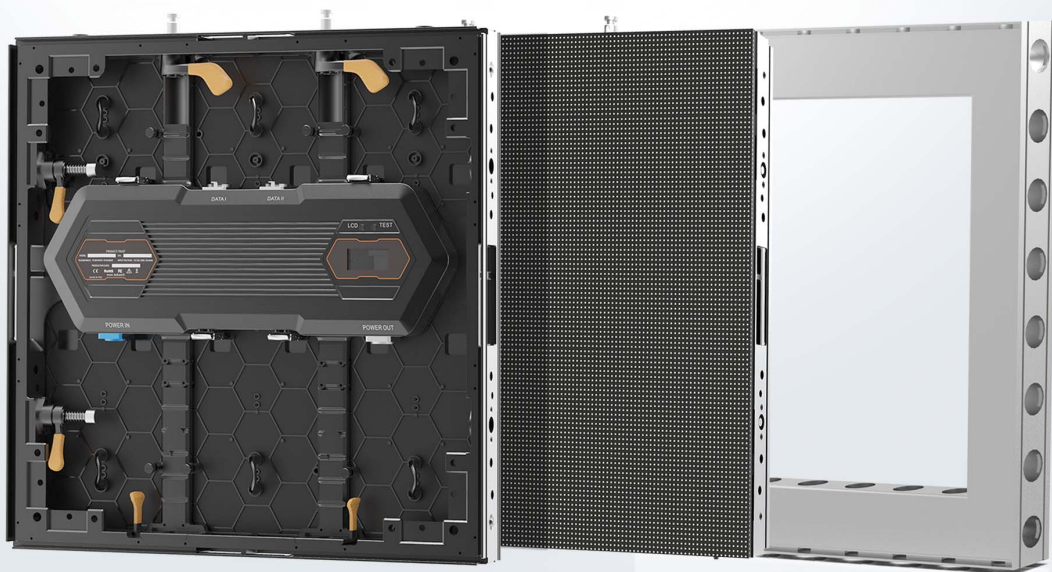
**Easy-Ads Modular Exhibit LED Solution**

# **DESAY**

[www.desayopto.com](http://www.desayopto.com)

**D**eveloped specifically for the exhibition-building and rental market, the most affordable 496x496mm lightweight and slim modular led tile offers the flexibility to be used for various application. Thanks to its cutting-edge tool-free panel design, it is available to easily build large or small dynamic video screens for various indoor applications, such as exhibition, concerts, TV studio, car shows and sports events etc.

Moreover, its unique dimension of 496x496x55mm enables a seamless integration of LED screens into both the 496x496x62mm and 496x496x55mm modular constructions, for a brilliant and stunning visual experience.



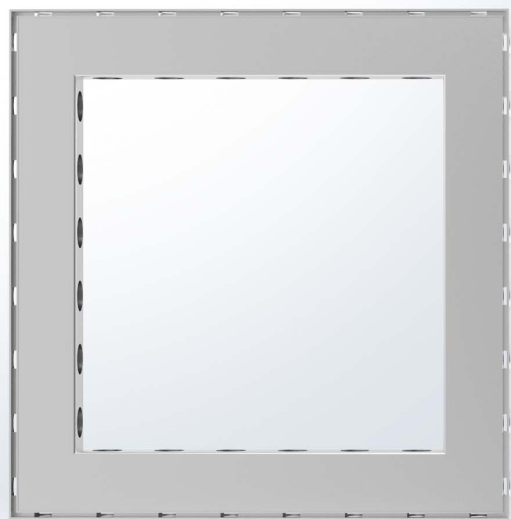
**DESAY**

[www.desayopto.com](http://www.desayopto.com)



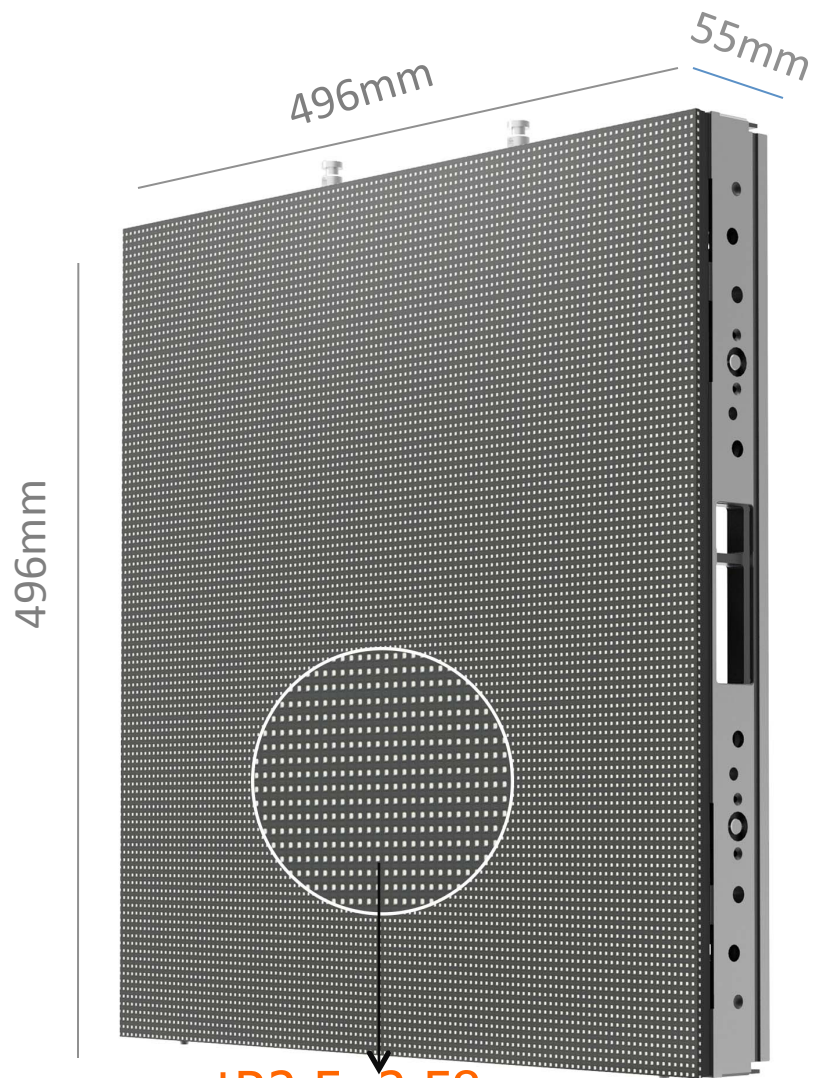
## Why choose Easy-Ads modular LED solution?

- ✓ Innovative magnet "M-lock" for simpler & faster handling.
- ✓ Memory-on-board module design for best uniformity.
- ✓ Wireless design for better reliability.
- ✓ Full front & back access for flexible maintenance.
- ✓ Modular design for easy and fast service.
- ✓ Vivid color, immersive, stunning. image performance.



**DESAY**

[www.desayopto.com](http://www.desayopto.com)



tR2.5: 2.58mm  
tR2.9: 2.95mm



**DESAY**

[www.desayopto.com](http://www.desayopto.com)



Internal cabling design

**DESAY**

[www.desayopto.com](http://www.desayopto.com)

Thread for adjustable foot, to enable raised floor construction

Tool-free fast locking system

Tool-free interchangeable power box

Possibility to cover back side with hard panel



Magnetic lock

LCD information display

Easy grip module handle

55/62mm



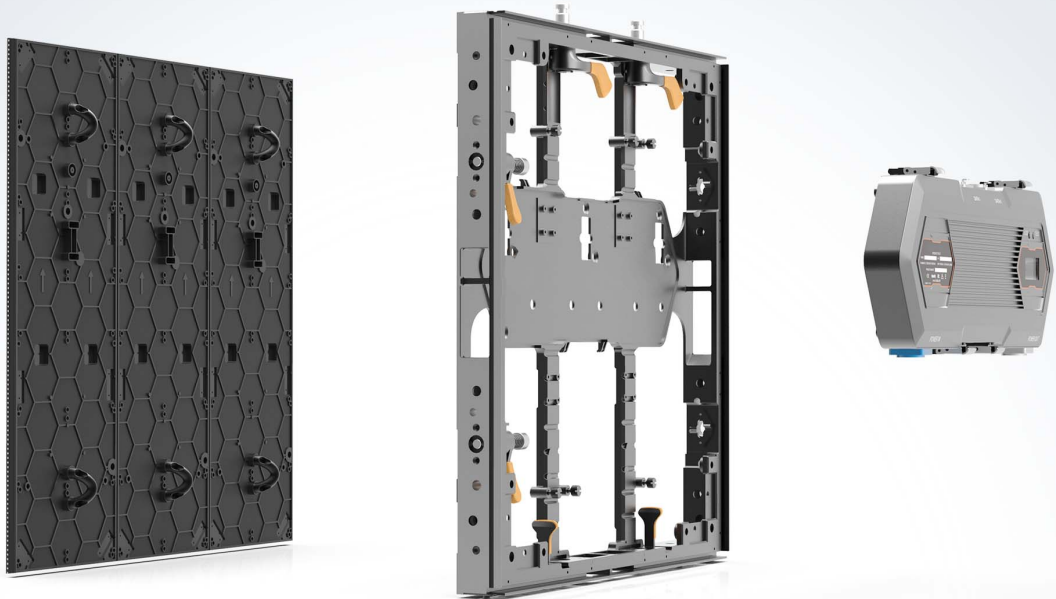
496x496mm modular led tile

496x496mm modular frame

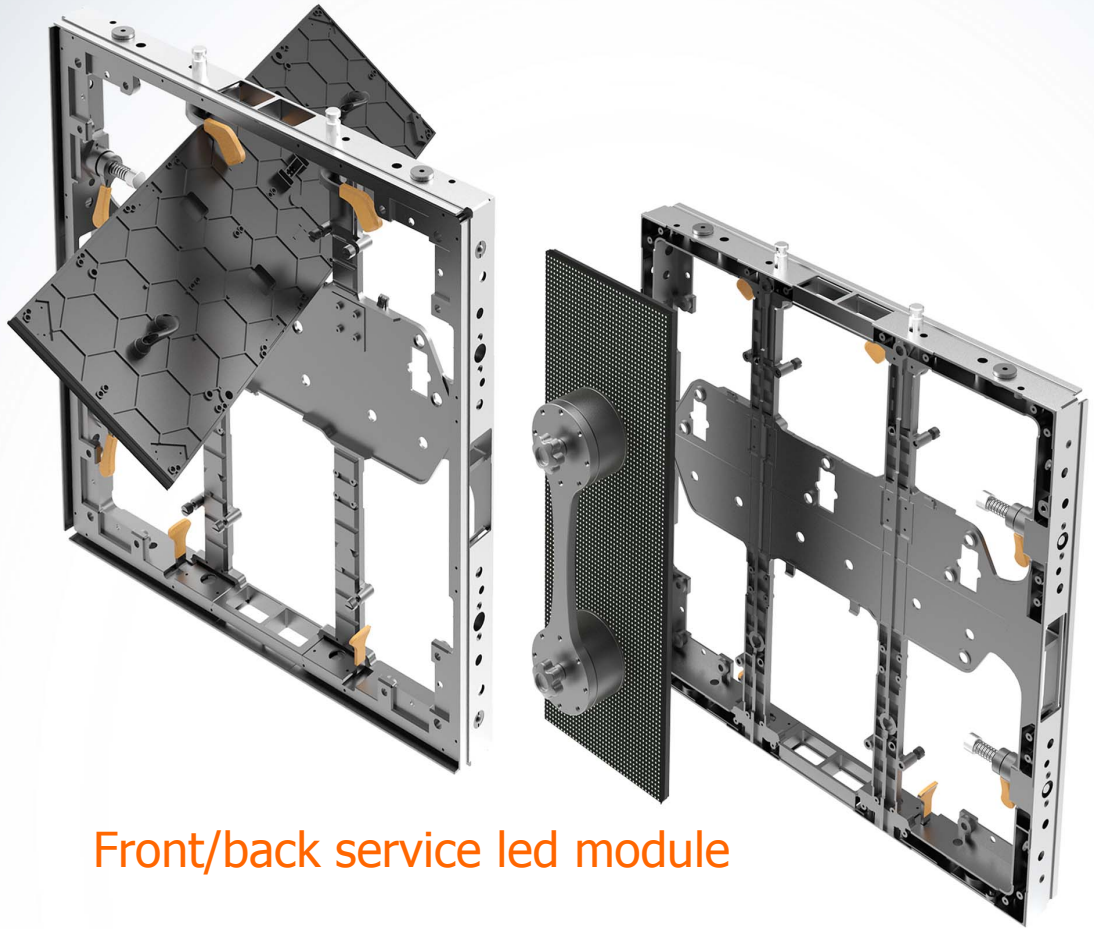
**DESAY**

[www.desayopto.com](http://www.desayopto.com)

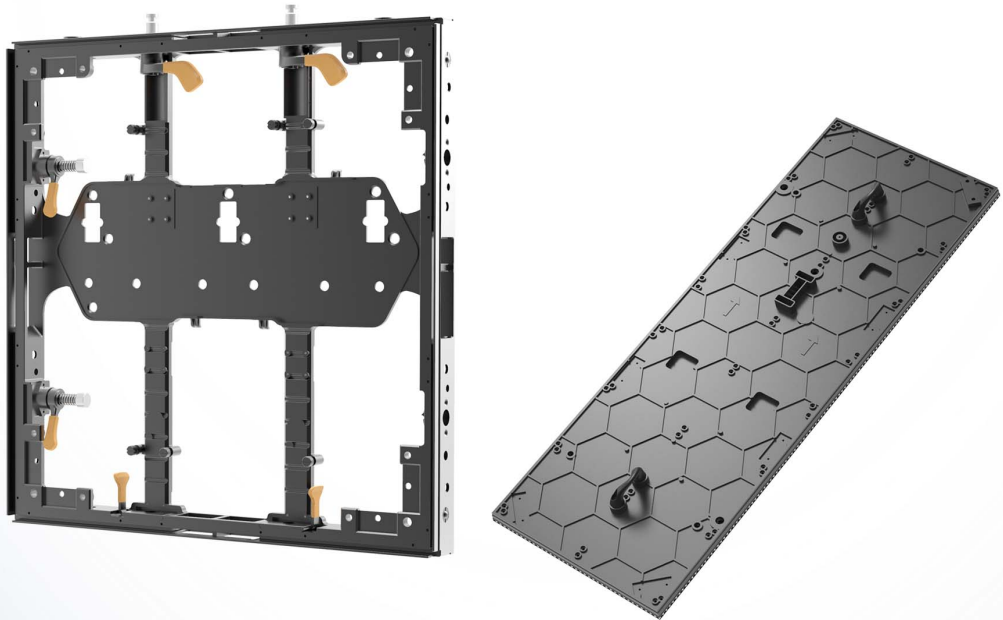
**MODULAR DESIGN:**  
**3 modules + 1 led frame + 1 power box**  
**= 1 Easy-Ads led tile**



**2.58mm/2.95mm modules share**  
**the same led frame and power box**



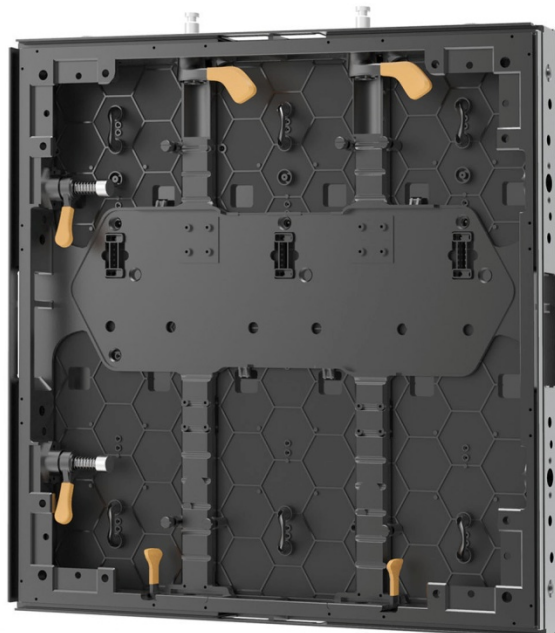
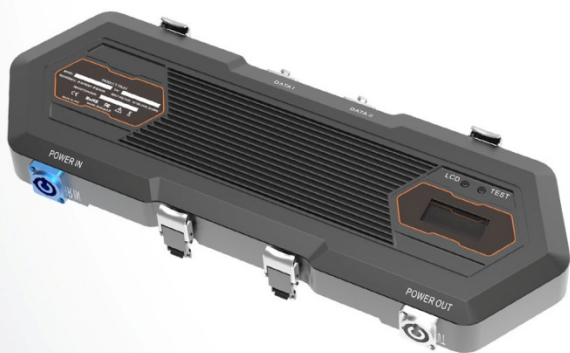
Front/back service led module





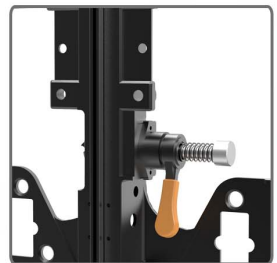
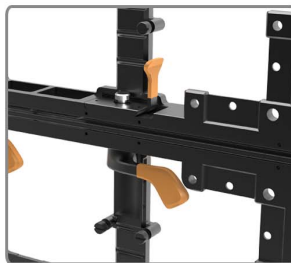
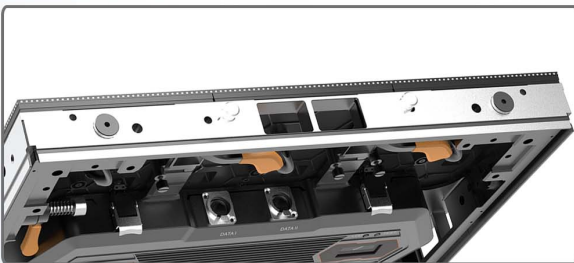


Tool-free all-in-one interchangeable power box for simpler and faster service



**DESAY**

[www.desayopto.com](http://www.desayopto.com)



"Magnet assisted lock" and super fast-locking system design, all for easier and simpler setup and dismantling by one single technician.

**DESAY**

[www.desayopto.com](http://www.desayopto.com)



AC main power cable



Main data cable



Main controller



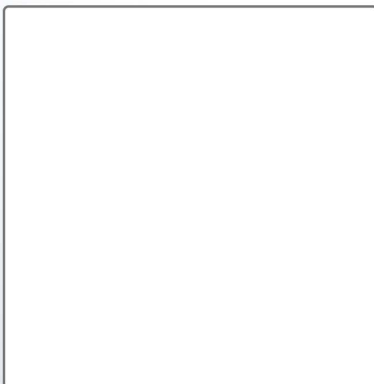
Interlink power cable



Interlink data cable



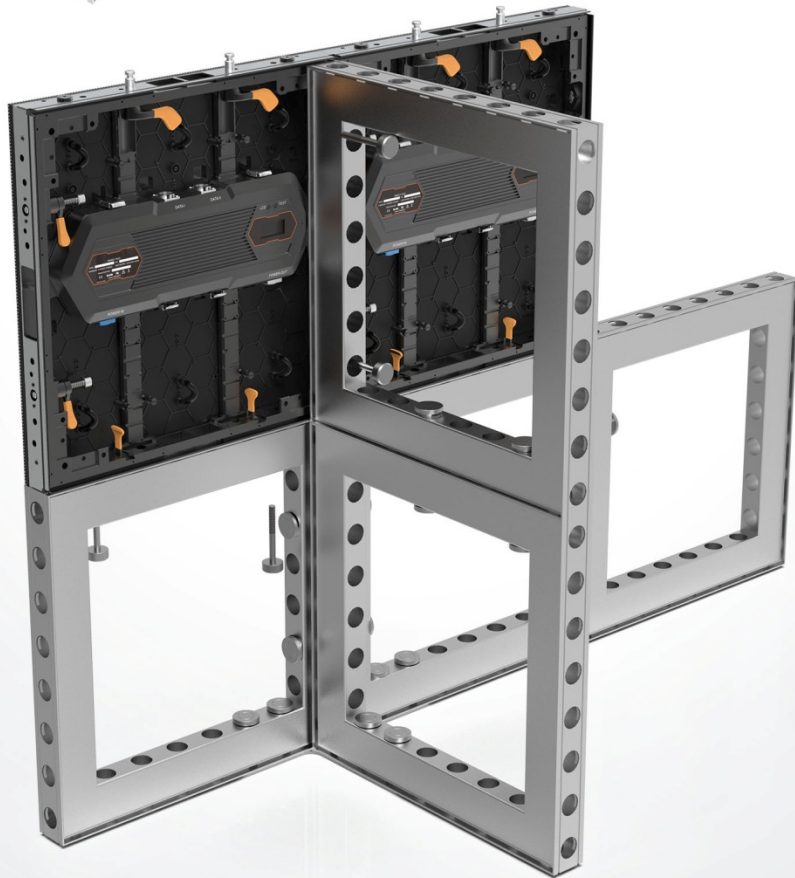
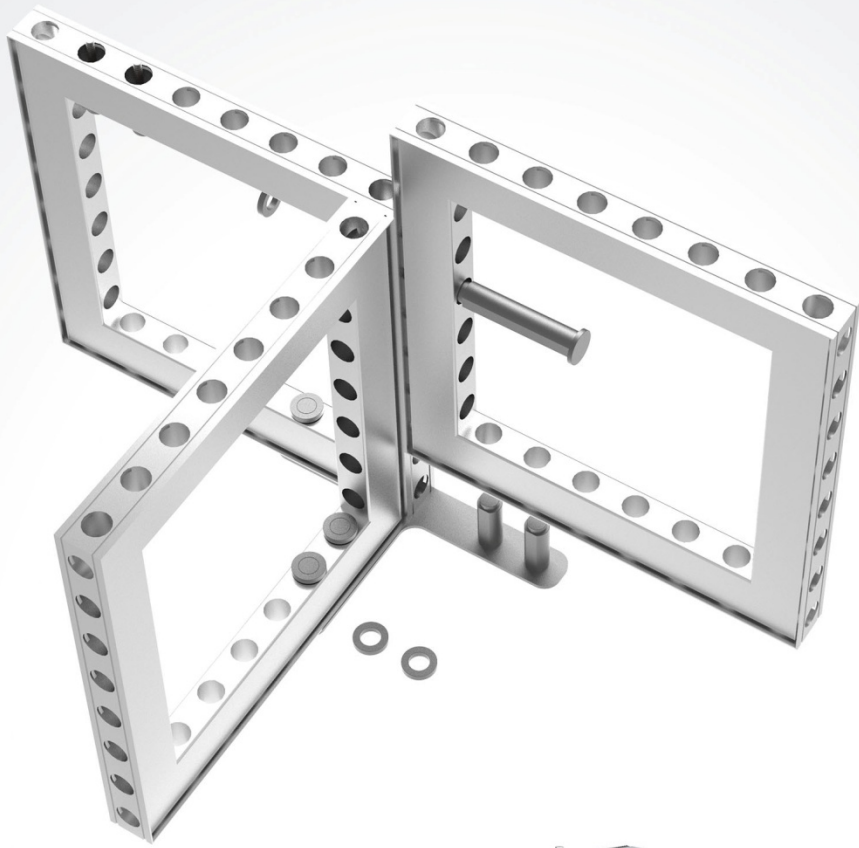
Magnet service tool



Hanging bracket  
1er, 2er, 3er, 4er.



Easy-trans flight case



**DESAY**

[www.desayopto.com](http://www.desayopto.com)

# TECHNICAL DATA



PIXEL  
PITCH  
2.5: 2.58 mm  
2.9: 2.95 mm



VIEWING  
ANGLE  
140°/120°  
(H/V)



VIEWING  
DISTANCE  
2.5:  $\geq 2.5\text{m}$   
2.9:  $\geq 2.9\text{m}$



CABINET  
DIMENSION  
496X496X55mm



PIXEL  
DENSITY  
2.5:  
149,836px/m<sup>2</sup>  
2.9:  
114,720px/m<sup>2</sup>



TILE  
RESOLUTION  
2.5: 192x192px  
2.9: 168x168px



CABINET  
WEIGHT  
7.2KGS



OPERATING  
SYSTEM  
Windows 2000/  
XP/Vista/10



SENDING  
BOX  
Nova 660,  
VX4S ,4K



POWER  
BOX  
2.5: Nova A8S  
2.9: Nova A5S



REFRESH  
RATE  
2880 Hz



BRIGHTNESS  
1000 nits



GRAYSCALE  
2.5: 18 Bits  
2.9: 16 Bits



CONTRAST  
RATIO  
2.5: 5000:1  
2.9: 6500:1









**DESAY**

---

[www.desayopto.com](http://www.desayopto.com)